



Collezionare il tempo:
Il paleontologo da Museo

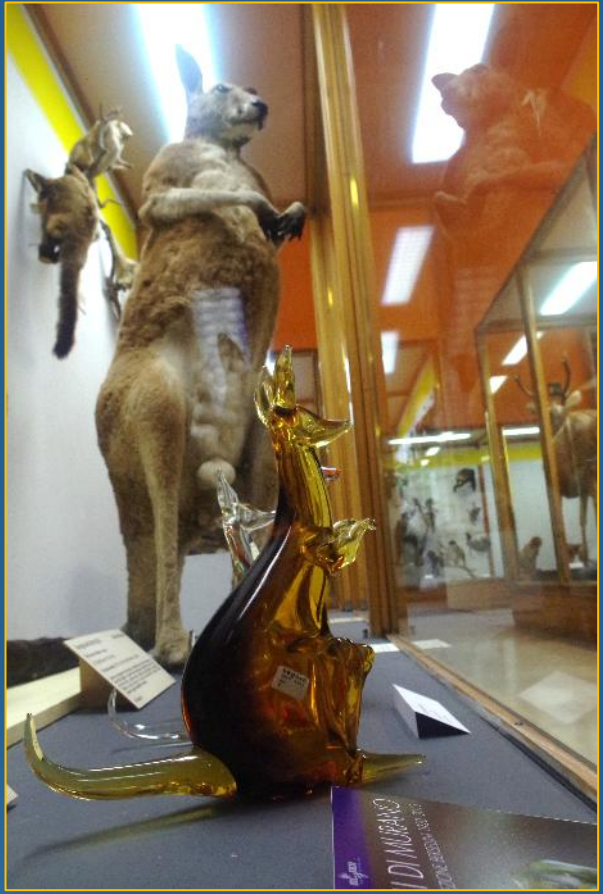
IASF 22 dicembre 2016



Collezioni



Esposizioni



Mostre



Eventi





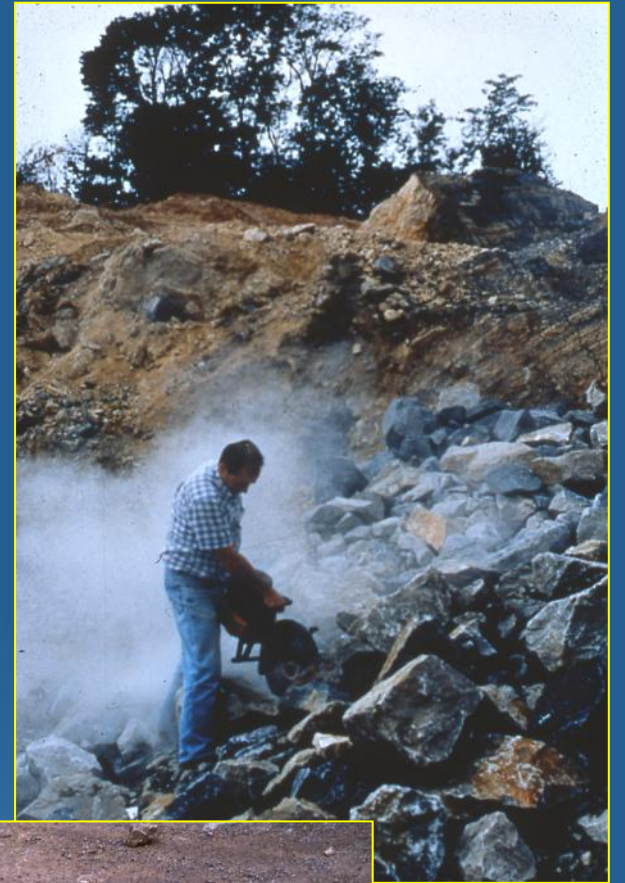


Donazioni



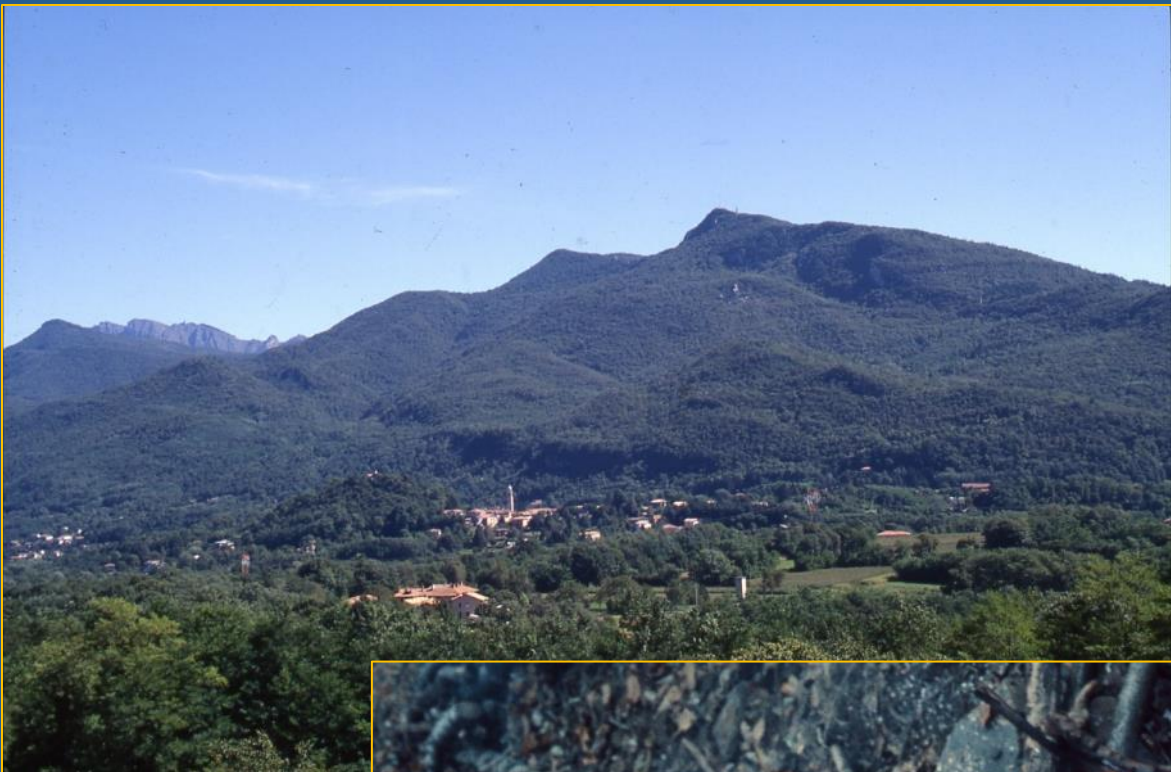


Casualità

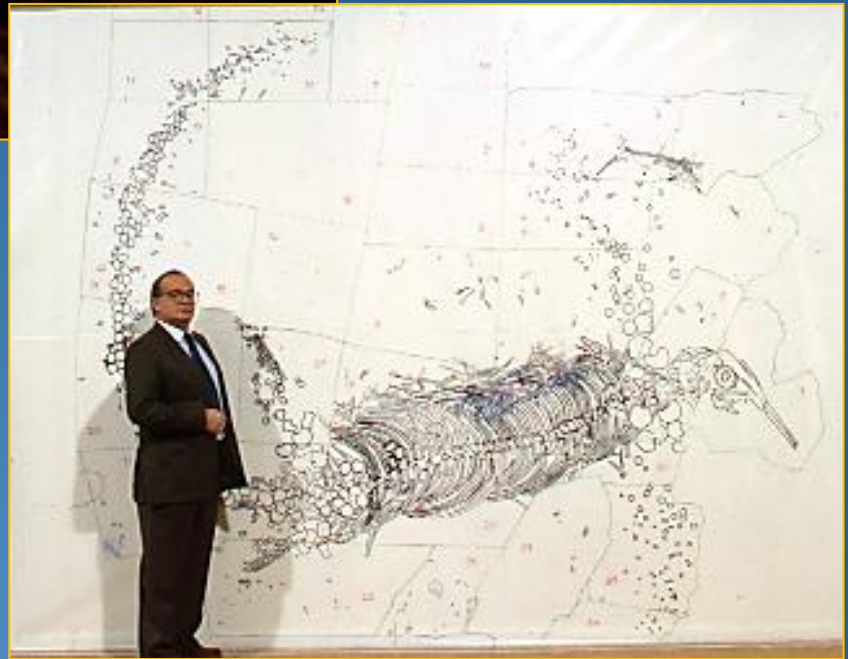
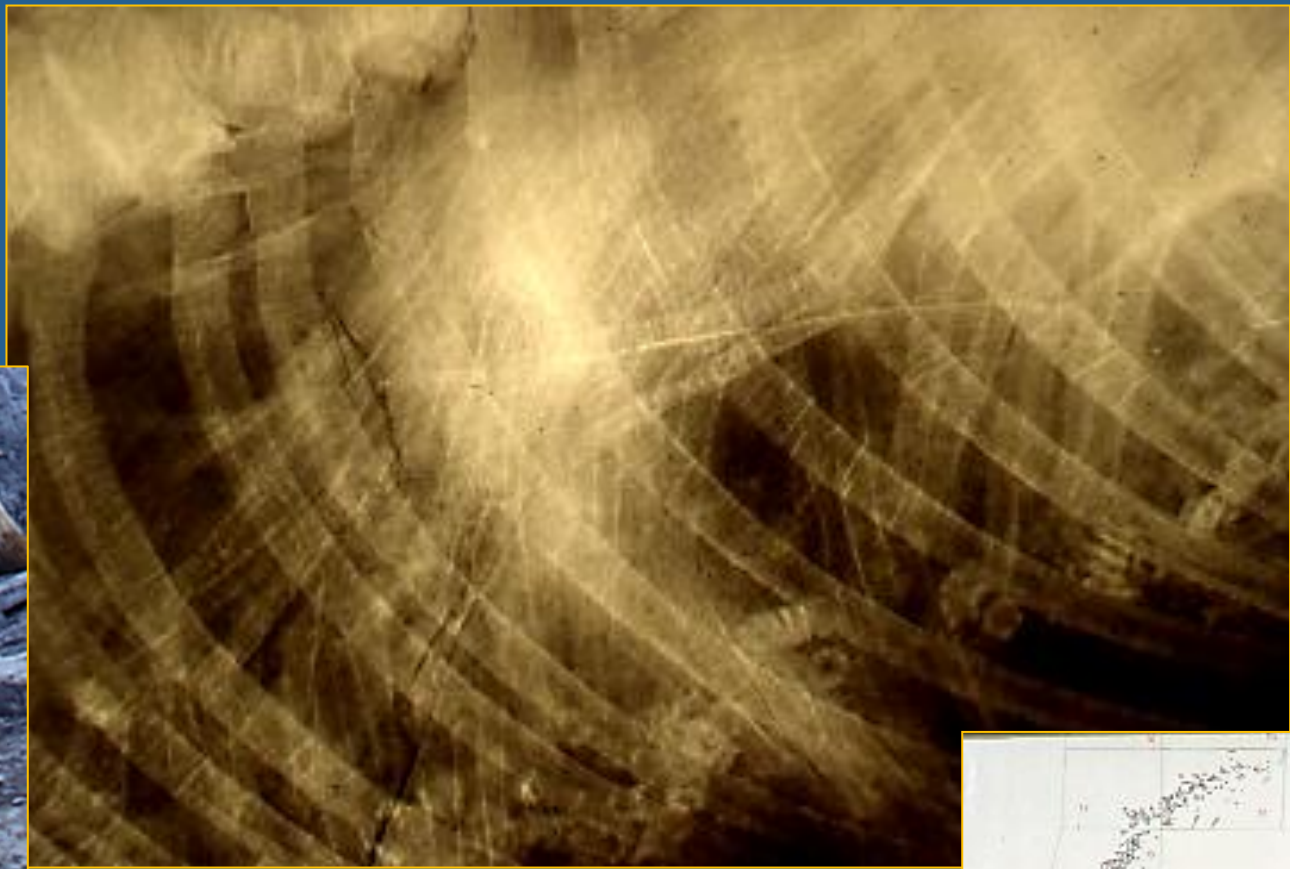




Scavi



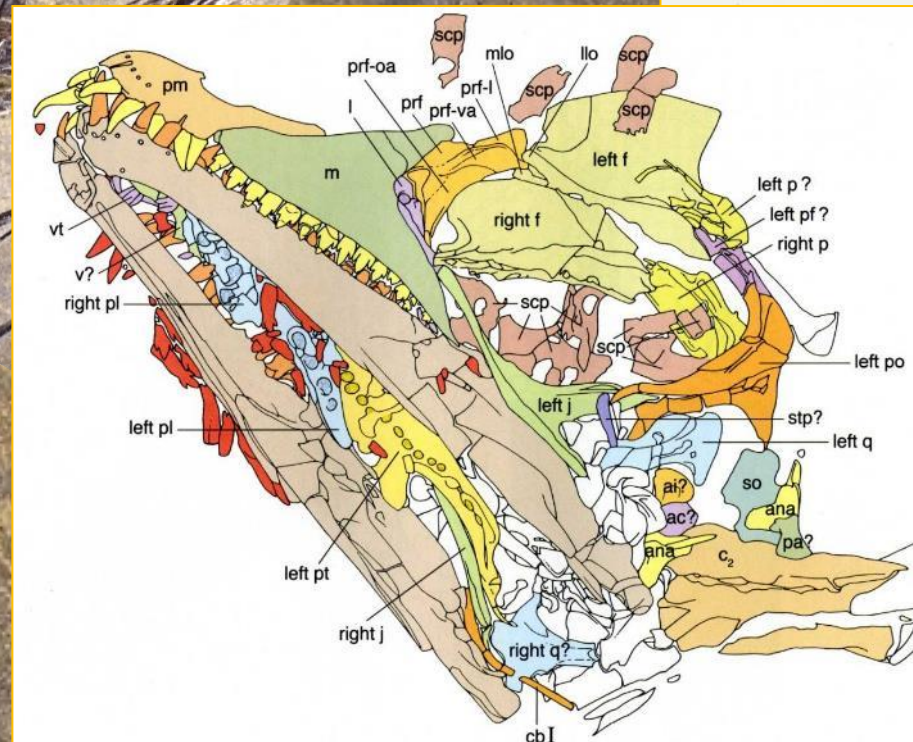
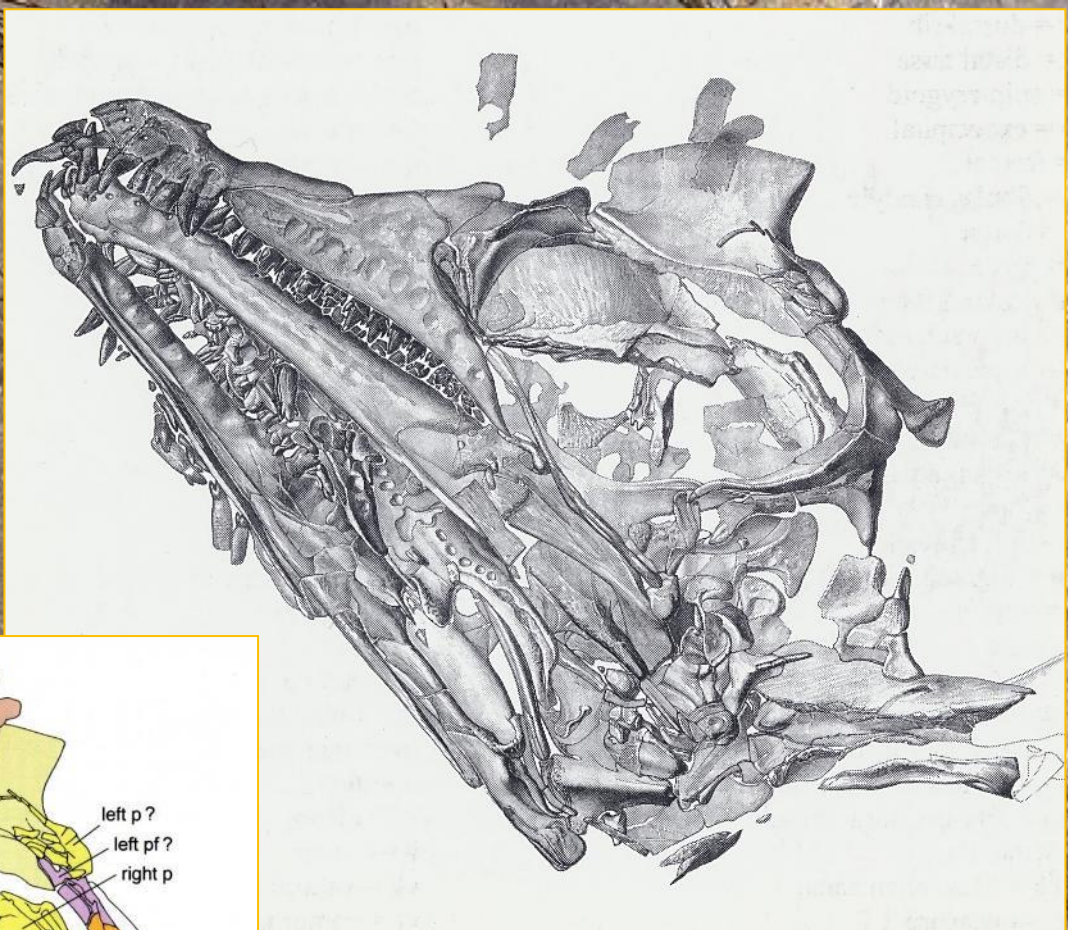
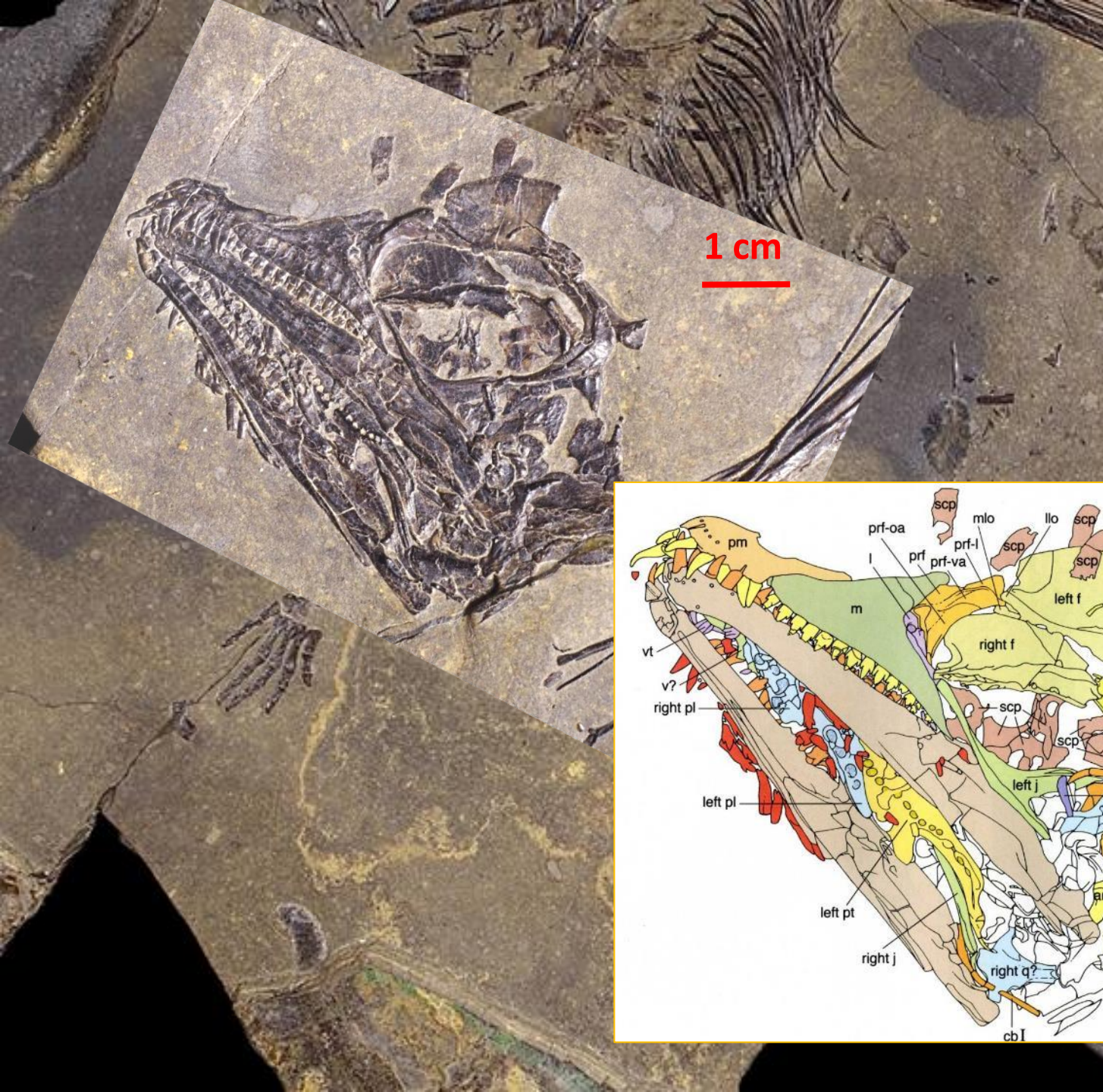


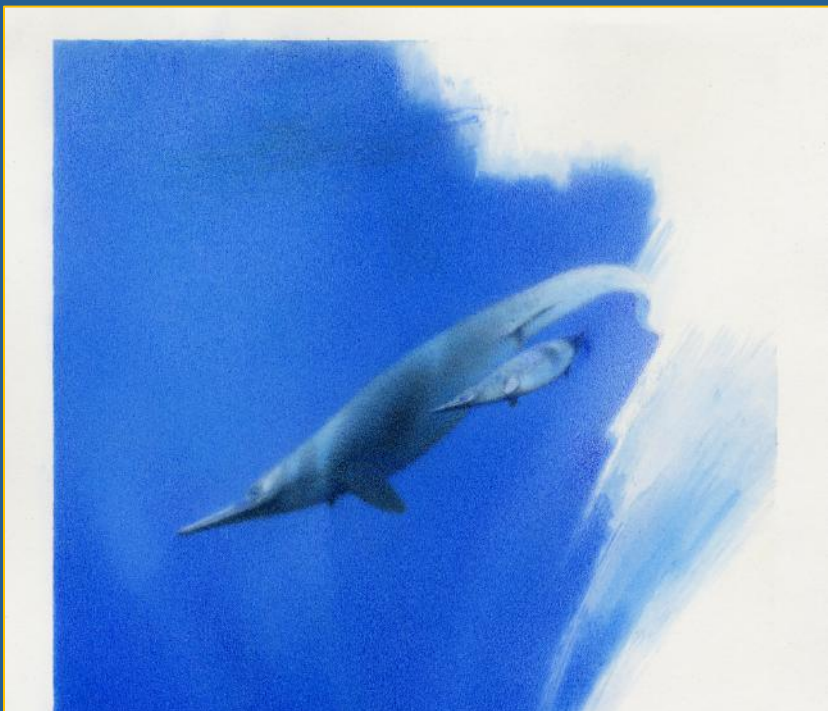


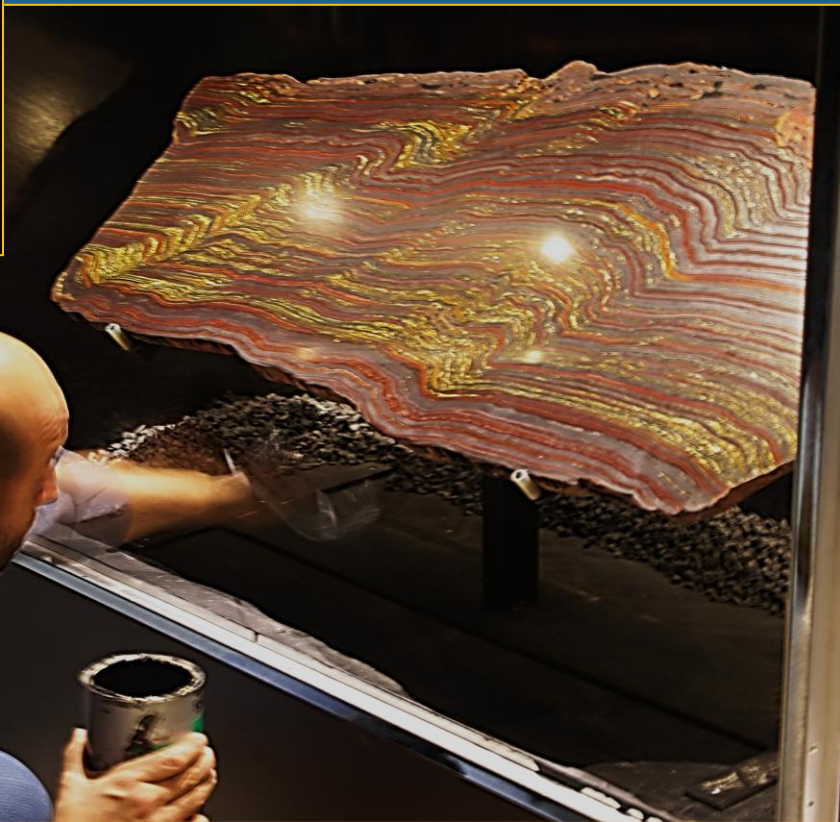
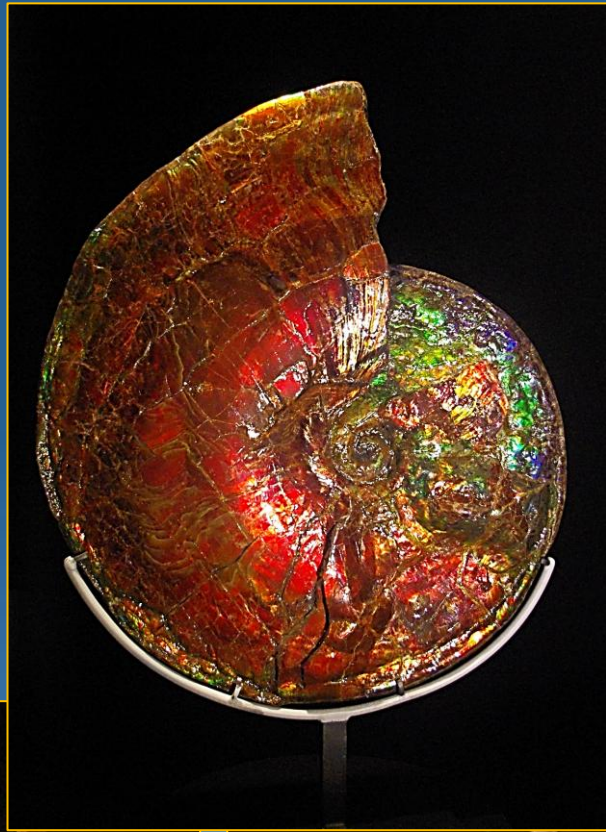






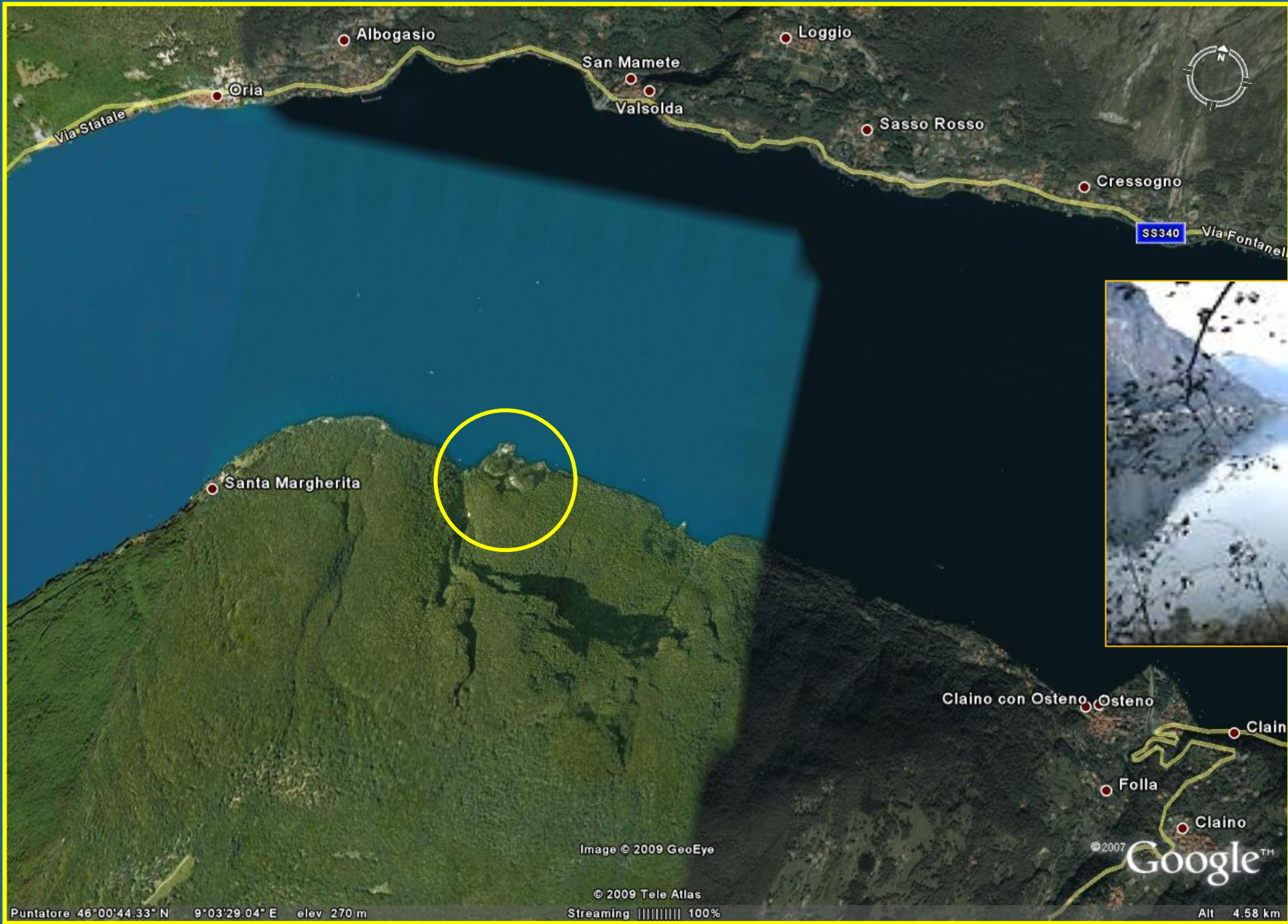












Puntatore 46°00'44.33" N 9°03'29.04" E elev 270 m

Image © 2009 GeoEye

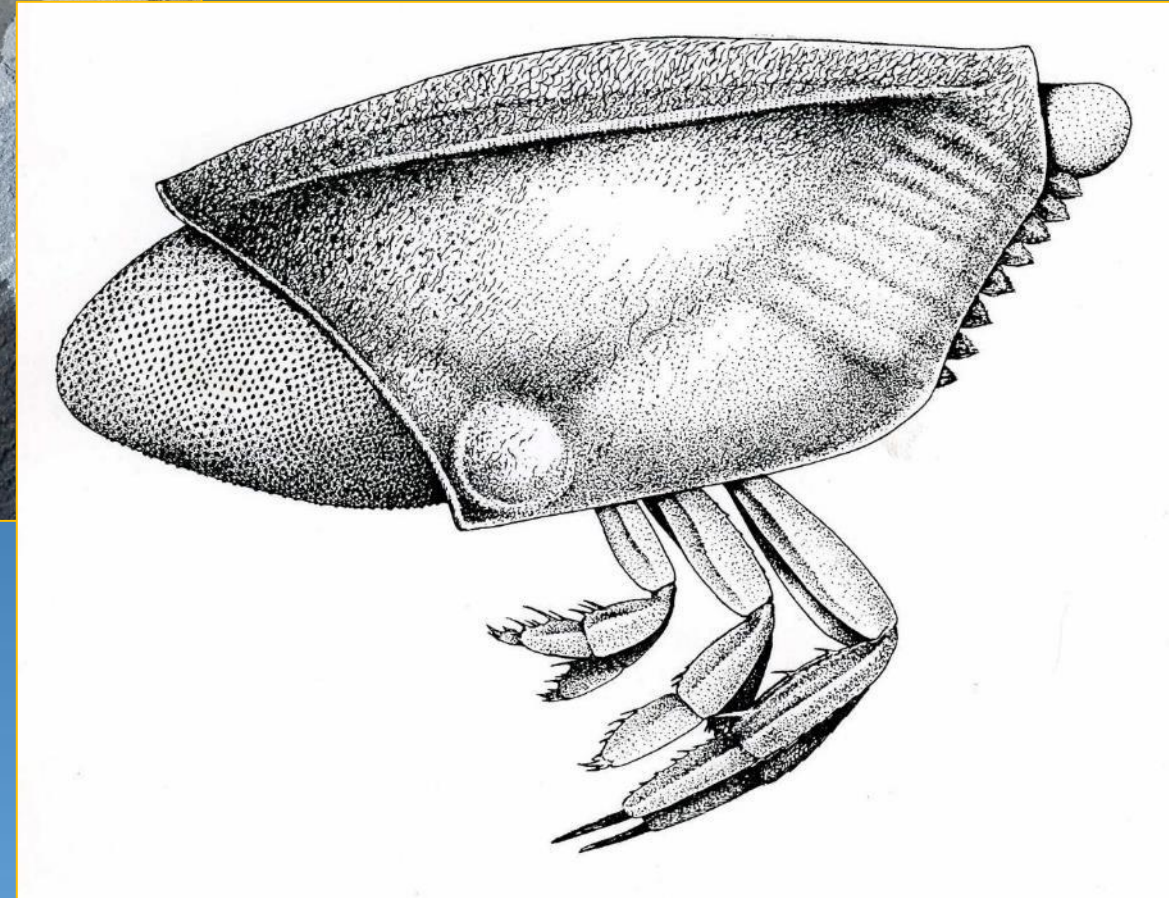
© 2009 Tele Atlas

Streaming 100%

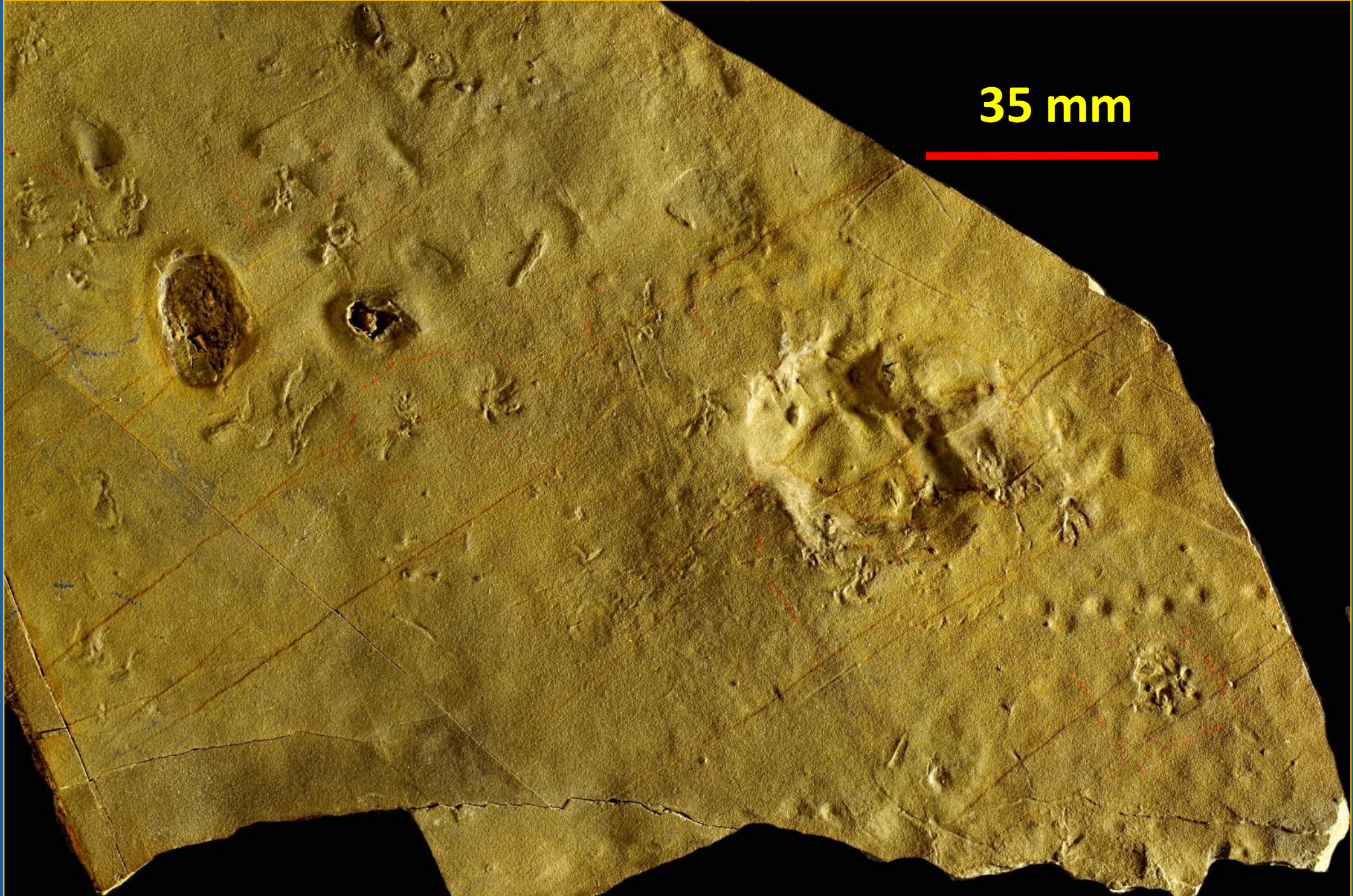
© 2007 Google™

Alt 4.58 km

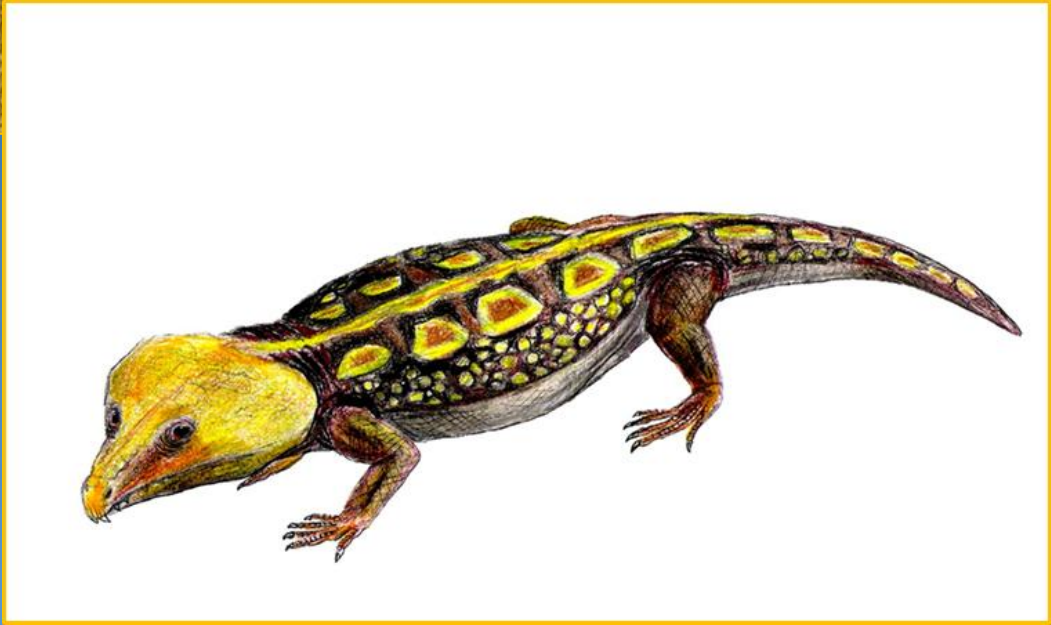


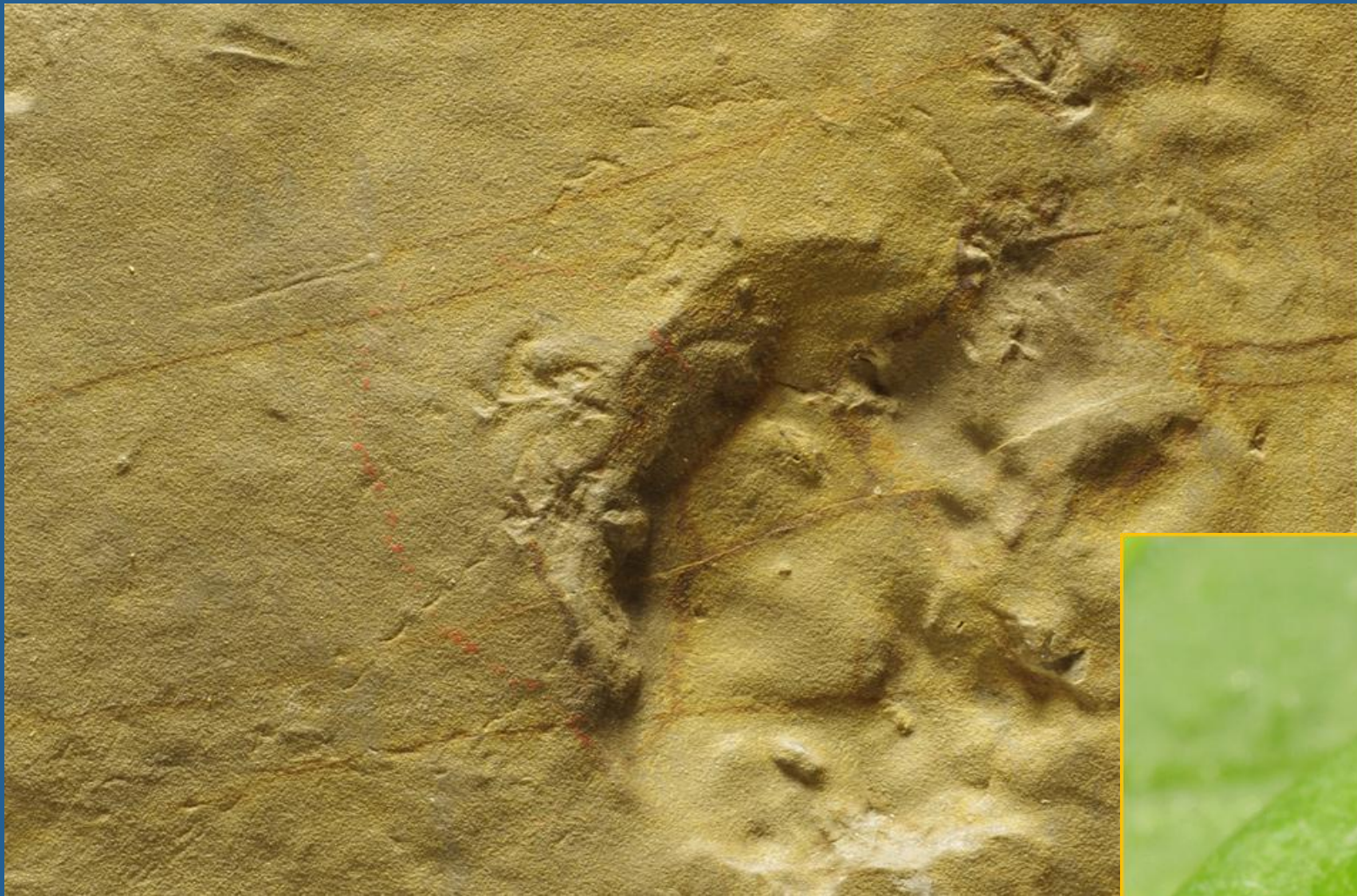


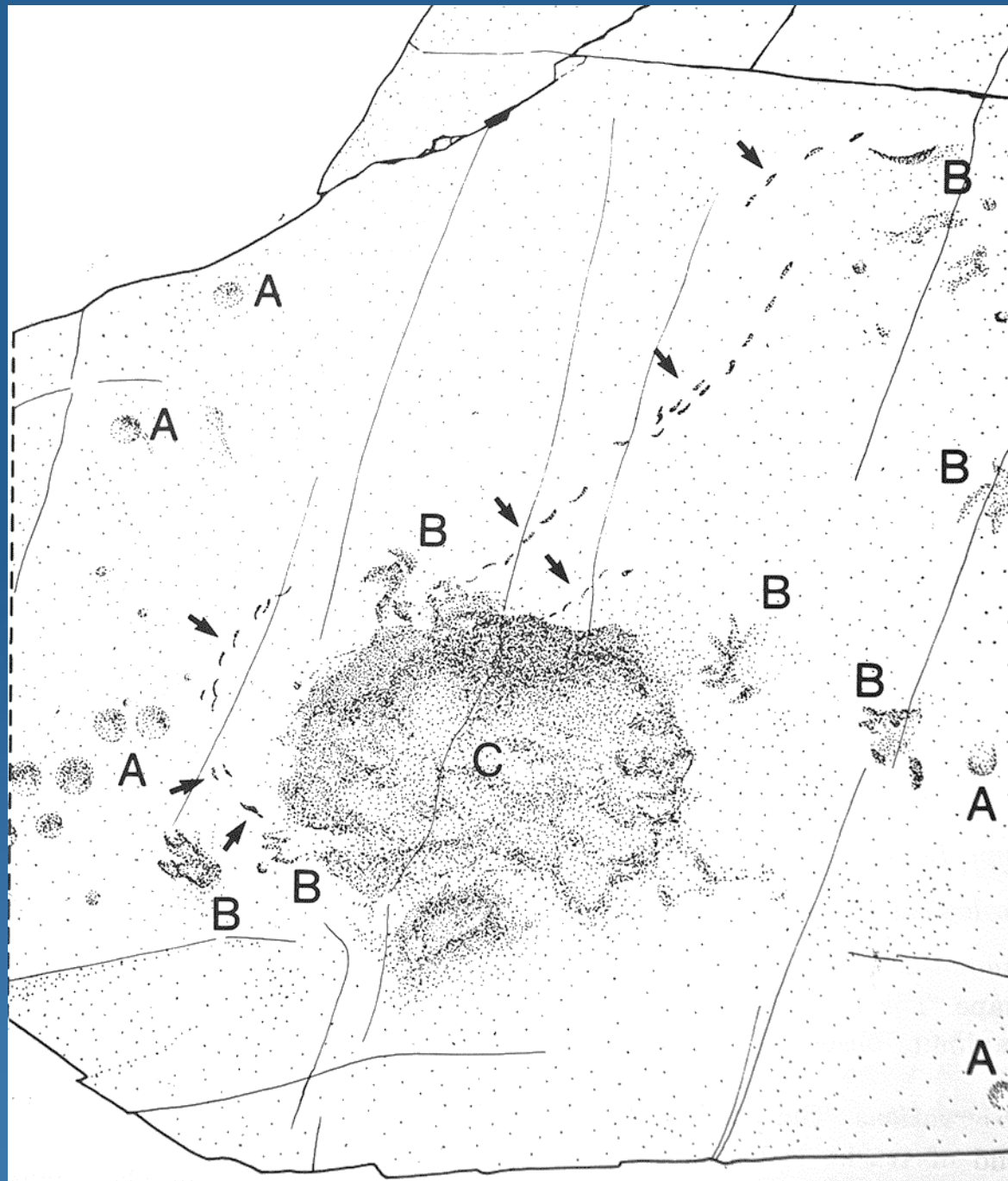
35 mm











A dramatic sunset scene over a vast, cracked, and dry lake bed. The sky is filled with vibrant, fiery colors of orange, red, and purple, with the sun low on the horizon. The foreground is dominated by a dense pattern of irregular, polygonal cracks in the dry earth, creating a textured, mosaic-like appearance. In the distance, dark silhouettes of mountains are visible against the bright sky. The overall mood is one of ancient, desolate beauty.

Un tramonto, 280 milioni di anni fa